

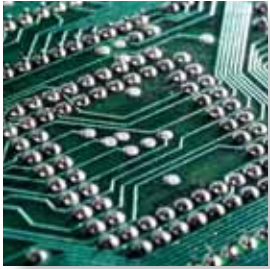
Global Reach. Individual Care.



**JAMES J. BOYLE & CO.**

CUSTOMS BROKER • GLOBAL FREIGHT FORWARDER





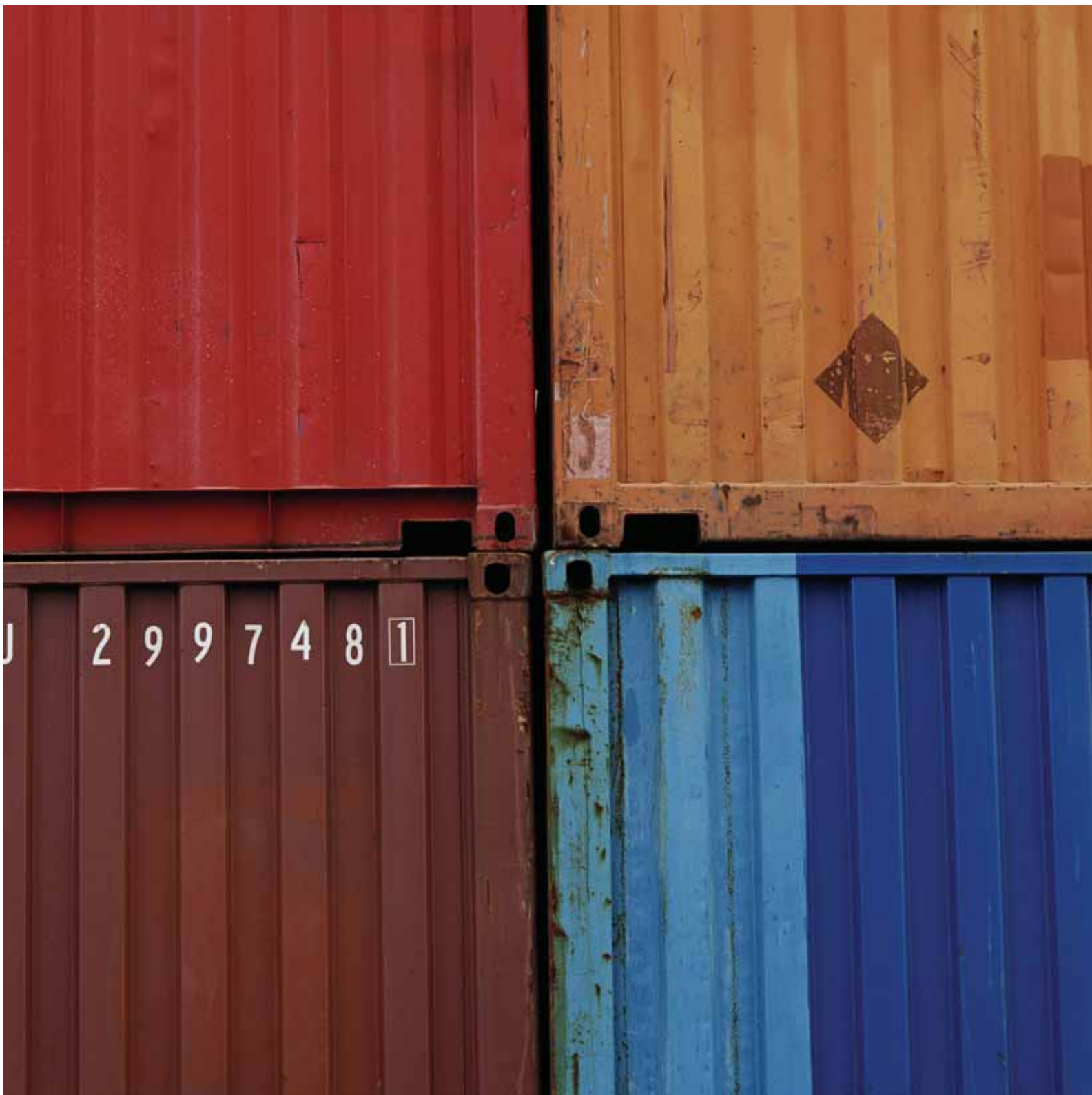
## JAMES J. BOYLE & Co.

There are many choices and obstacles your merchandise faces to reach its destination. JJB provides the most direct and efficient solution to get your cargo from Point A to Point B.

A company can only achieve the kind of staying power that JJB has enjoyed when its mission is to give the best service that a Customs Broker & freight forwarder can offer on each and every transaction. JJB strives to make the journey of your cargo cost-effective and free of complications or delays. Our customers' peace of mind and satisfaction is our top priority. As a result, JJB and our clients will prosper and grow together.

What sets JJB apart from an increasingly competitive field is our unparalleled staff of managers and executives. Our teams possess an invaluable blend of specialized skills and customer service that makes working with us a profitable and enjoyable experience. On average, JJB's client retention rate is 95%. We are successful when a client becomes a business partner and in turn, the business partner becomes a trusted friend. Each completed transaction signifies the growth of the relationship, not just another entry in the ledger.

Since our inception over forty years ago, our corporate culture has been that integrity and business ethics must be practiced by every member of the JJB team. Every client has direct access to our executives for any issue which cannot be said for our oversized competitors. We foster an environment where not only our customers but also our staff can interact freely with managers and executives. The result is a positive family atmosphere rarely seen in our industry.



# SERVICES

*JJB is an international freight forwarder and Customs Broker providing transportation for the valued cargo of others and the myriad responsibilities that entails. Our expert and experienced staff will tailor JJB's service to the specific needs of your business.*

*Navigating the ever-changing frontiers of global commerce requires the kind of dynamic network of alliances JJB has been building for over forty years. So if you're looking for a forwarder and Broker who offers more shipping options and better customer service, please contact us so we may show you a better way of doing business.*

## ■ IMPORT

A business is only as strong as its weakest link. This is why our staff stays up to date on industry news, trends and changes. Within JJB we use and share this knowledge in order to solve the inevitable challenges that arise in this ever-evolving field.

As your importation expert, we share our accumulated knowledge and experience with you, our client. Please consider us a resource for industry related questions.

JJB's staff maintains strong relationships with all relevant government agencies and gatekeepers to ensure that your cargo will never be delayed by new legislation, updated requirements, etc.

The scope of the import/export business is vast but JJB has experience transporting a broad spectrum of commodities and the unique complexities they bring with them. From raw materials to perishables to processed goods, JJB will ensure that your cargo reaches its destination in the most expedient

and cost-efficient way possible. JJB's status as a fully automated broker will further expedite the process by pre-clearing your cargo. If you require assistance in procuring warehousing at the source or at your U.S. destination, we can help.

Since "Time Is Money," every care is taken to minimize or eliminate delays in delivery. Our goal is to cover every logistical base and pursue every available avenue to secure full Customs release at the time of or prior to the cargo's arrival in port.

## ■ EXPORT

Does paperwork even exist in the 21st century world of e-commerce? Absolutely and often more than you'd imagine. When your company needs to ship cargo overseas, our experienced staff will not only provide up-to-the-second freight rates to ensure competitive bids for you but they will tackle the numerous rounds of paperwork to ensure the process goes smoothly

from port to port. Count on JJB for freight cost analysis, a full range of banking services and even coordination of jobs requiring multi-modal transport.

Whether your company has been exporting for a long time or you're new to the export world, JJB's finely-tuned ocean export departments will streamline the process for you.



# SERVICES

## ■ LOGISTICS

Freight forwarding also requires the mastery of cargo logistics. JJB will handle and monitor the negotiation of terms on your behalf, procure all pertinent contracts and letters of credit and manage your distribution channels and delivery schedules to name but a few of the logistic services we provide. Let us utilize our international network of overseas relationships to your benefit.

## ■ INSURANCE

Although JJB and our partners do everything in our power to minimize the possibility of damage or loss of cargo in transit, the chance of a cargo-related disaster can never be completely ruled out.

We encourage you to read and consider JJB's Open Cargo Policy as a way to protect your shipment from catastrophic loss. Our rates are competitive and in the event of a claim, we will work with a U.S. based company for settlement. Even the best laid plans can go awry; if they do, JJB's Open Cargo Policy will be there for you.

## ■ DRAWBACK

A question we're frequently asked is whether or not JJB can recoup "drawback" or duty already paid to Customs for exported cargo. The answer is: "Whenever possible!" Over the past five years JJB has averaged over \$1 million a year in drawback refunds for our clients. Our staff is well aware that this is an important consideration for many importer/exporters, which is why we specialize in duty refunds for goods that have been ear-marked for export. If your business needs include drawback claims for manufactured, rejected, or unused merchandise, application for accelerated drawback payment, waiver of prior notice of intent to export, or even a one-time waiver of prior notice of intent to export, JJB's team will bring their expertise to bear on the issue and generate the best possible results.

## ■ CONSULTING

JJB's decades of experience as a successful Customs Broker and freight forwarder puts us in the unique position to advise and consult importers & exporters seeking to enter or expand their presence in global trade. The regulatory and logistical needs of each company are unique and we take pride in delivering the kind of custom-tailored services that are difficult to find in larger corporations. Take the first step toward success in the world of international trade by contacting our company today.

## ■ IT SYSTEMS

Advances in programming and technology have leveled the playing field in the competitive world of international freight forwarding. As a mid-sized broker, JJB can offer the same (and often better) tracking and customs technologies as the larger firms without their unwieldy bureaucracies and program inflexibility that often lead to unnecessary delays and inefficiencies. JJB's personnel are fluent in Customs programs such as ABI (Automated Broker Interface), AES (Automated Export System), RLF (Remote Location Filing), ACE (Automated Commercial Environment) and more. It's one thing to claim that your IT Systems are more effective than the competition's but quite another to be able to prove it. Contact our systems department and allow our team of experts to discuss the advantages of our IT Systems in more detail.







## JJB TRAK

*Unwilling to settle for the limitations of existing systems, JJB applied its expertise and desire to have a state-of-the-art tracking system into the development of JJB Trak. JJB Trak is a powerful suite of customized Internet tools and cutting edge tracking software that provides each client with instant access to the status of their cargo, no matter where it may be in the world.*

*As the pace and urgency of business transactions demands more security and reliability, JJB Trak is the solution for our clients. The ability to access the details of their cargo's status with the touch of a button, 24 hours a day, is crucial to managing a tight deadline.*

*Our dedicated staff will determine precisely what features you need from the flexible JJBTrak modules we have available, ensuring that the needs of your unique business are always met. If you're interested in more information than the descriptions below, please contact your account representative.*

### ■ JJB TRAK

JJBTrak provides our clients with round-the-clock access to the release and delivery status of shipments at every stage of transit. Authorized users can log in to a secure login page from any computer to check the status at any time or choose our email notification service that will automatically send you notice of progress or change in the status of your shipment.

### ■ NOTIFY

JJBTrak's automated notification function eliminates the need to phone your account representative when you're eager for confirmation of delivery. The moment your shipment clears Customs, JJBTrak will automatically alert you via email. Contact us to begin the simple setup process for JJBTrak today!

### ■ CUSTOM REPORTING

Further streamlining the process, JJBTrak allows us to produce custom reports for each shipment based on the criteria that you require. The reports are valuable for the management and accounting of your business.

### ■ AGENT CONNECTION

JJBTrak's Agent Connection function provides communications conduits to our domestic and international strategic partners. This secure EDI (Electronic Data Interchange) connection assures that your shipment data is utilized only by those approved by both JJB and you. We can easily link you to your overseas agent in those cases where importers are utilizing agents other than JJB. No matter what configuration of partners and agencies your business has chosen to meet your freight forwarding needs, JJBTrak will provide you with the accurate internet tracking information you need.

### ■ VERISIGN SECURITY

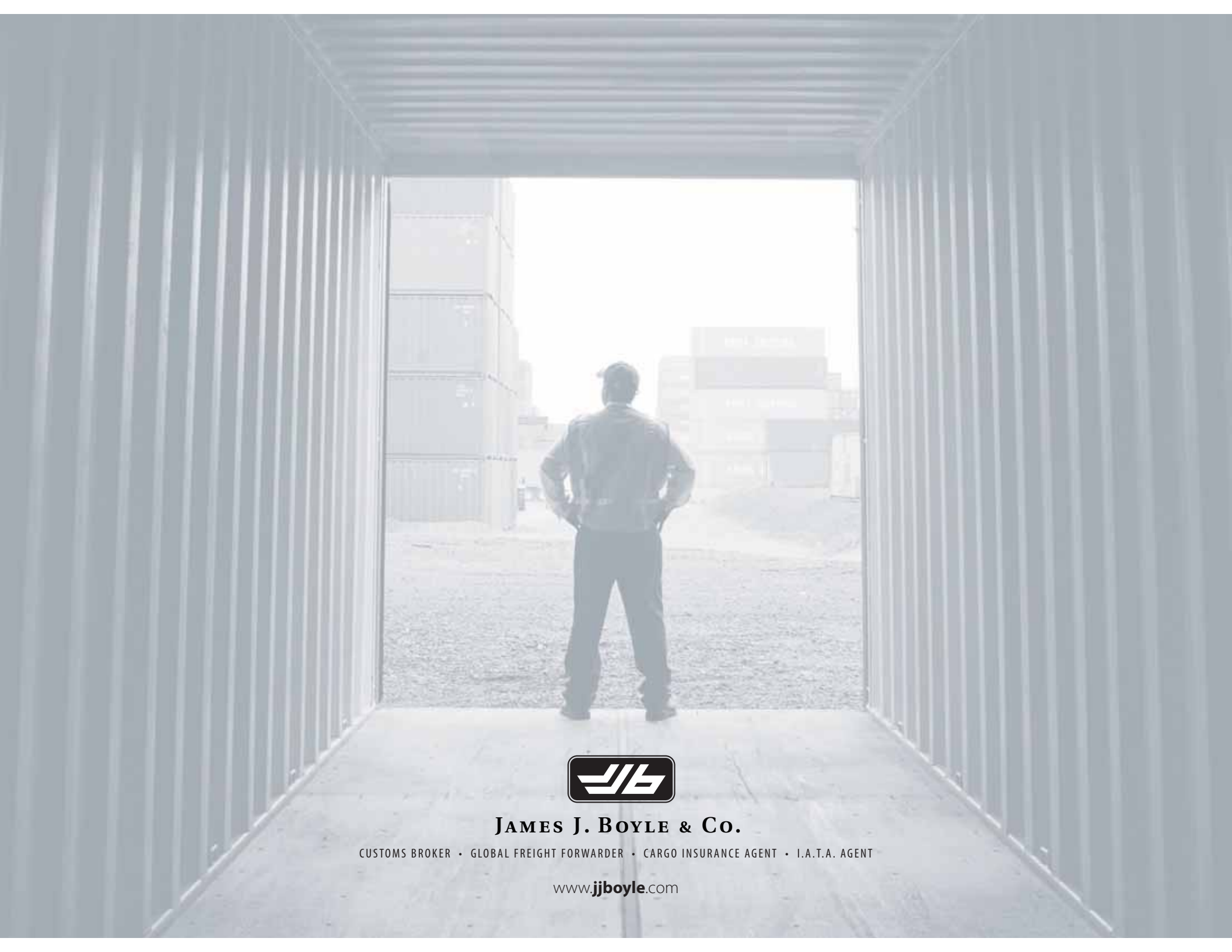
Protecting client data is of paramount importance to JJB and demonstrating our commitment to security with each and every shipment is one of the many ways we build long-lasting relationships with our clients. JJBTrak's data is encrypted over verified 128 bit SSL connections. When you compare our rigorous security measures against those of our competitors, we're confident you'll see that JJB places the same value on your data as you do.



Let us open doors around the world for your business.



**JAMES J. BOYLE & CO.**



**JAMES J. BOYLE & Co.**

CUSTOMS BROKER • GLOBAL FREIGHT FORWARDER • CARGO INSURANCE AGENT • I.A.T.A. AGENT

[www.jjboyle.com](http://www.jjboyle.com)